

For Illustrative Purposes Only



PLEASE NOTE for Desert Ridge Only:
Color Blocking is not reflected in Artistic Renderings. Please see Sales Associate for locations of Color Blocking.

Elevation A

PLEASE NOTE for Desert Ridge Only:
Color Blocking is not reflected in Artistic Renderings. Please see Sales Associate for locations of Color Blocking.



Elevation B



PLEASE NOTE for Desert Ridge Only:
Color Blocking is not reflected in Artistic Renderings. Please see Sales Associate for locations of Color Blocking.

Elevation C
Shown with Optional LedgeStone
(Standard in Select Neighborhoods
- See Sales Associate)



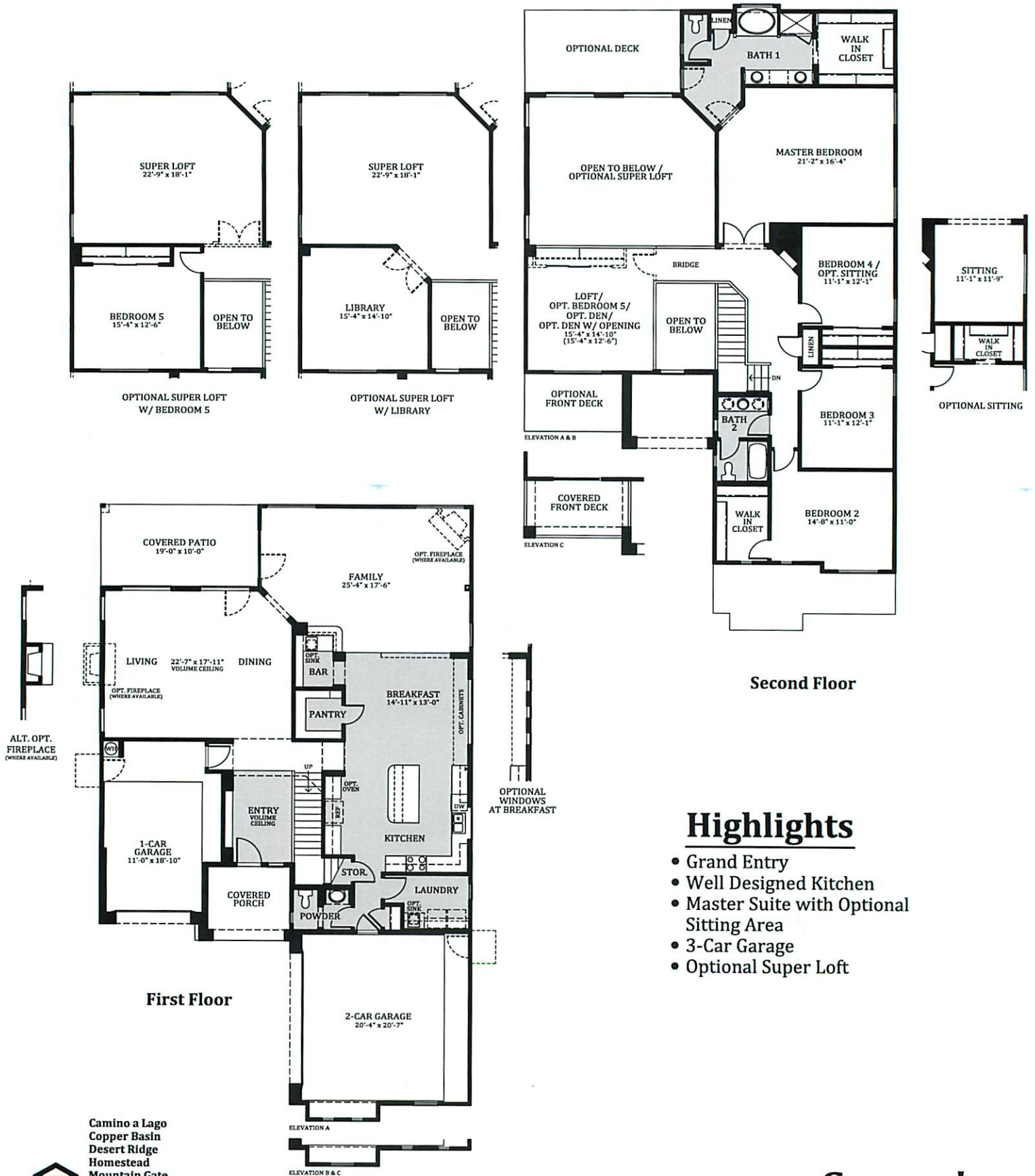
E1709/0/9-14-09

© 2005 DRH Properties, Inc, Broker. Location, size, existence of doors, windows, walls, fireplaces, vaulted areas, cabinets and any other item depicted may vary depending on exterior preference, choice of options, or by subdivision. Prices, plans, features and materials are subject to change without notice. Floor plans and square footage are approximate and elevations are artistic renderings. Construction by CHI Construction Company, License #ROC 064532-B. DRH Construction Company, License #ROC 113105 and DRH Southwest Construction Inc, License #ROC 167302
www.drhorton.com

D·R·HORTON DHI LISTED NYSE
America's Builder

Seaver's
Plan 1709

For Illustrative Purposes Only



Second Floor

First Floor

Highlights

- Grand Entry
- Well Designed Kitchen
- Master Suite with Optional Sitting Area
- 3-Car Garage
- Optional Super Loft



Camino a Lago
Copper Basin
Desert Ridge
Homestead
Mountain Gate
Mountainside
F1709/0/3-5-10

D·R·HORTON DHI Listed NYSE
America's Builder

Seaver's

Plan 1709

3523 Sq. Ft.

© 2005 DRH Properties, Inc. Broker. Location, size, existence of doors, windows, walls, fireplaces, vaulted areas, cabinets and any other item depicted may vary depending on exterior preference, choice of options, or by subdivision. Prices, plans, features and materials are subject to change without notice. Floor plans and square footage are approximate and elevations are artistic renderings. Construction by CHI Construction Company, License #ROC 064532-B, DRH Construction Company, License #ROC 113105 and DRH Southwest Construction Inc, License #ROC 167302
www.drhorton.com