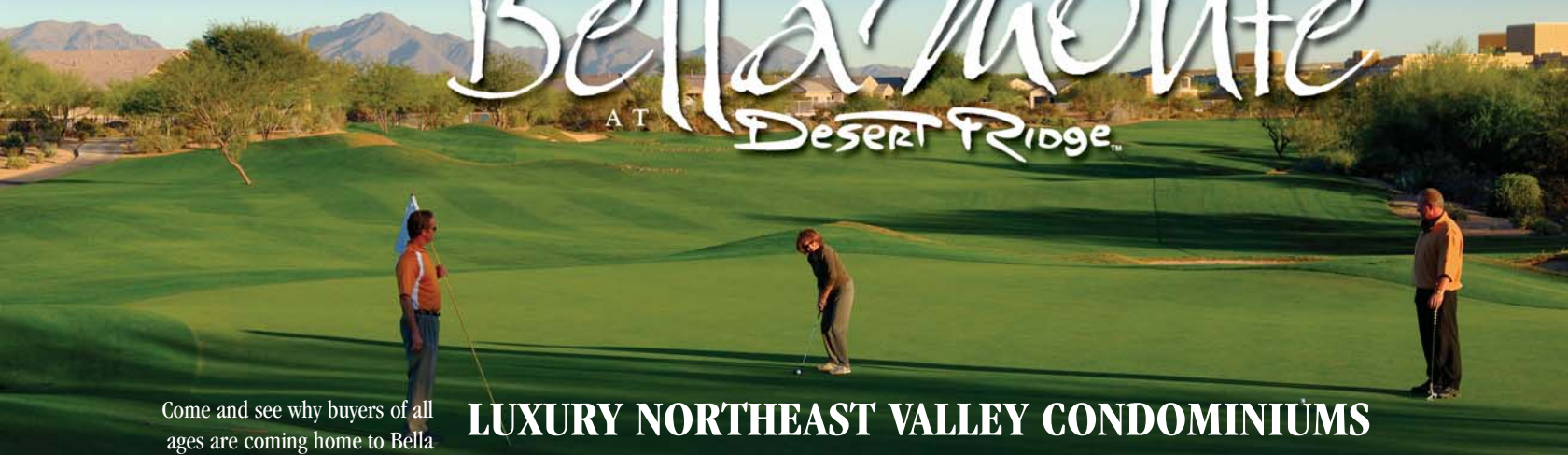


PRESENTING

# Bella Monte

AT DESERT RIDGE™



## LUXURY NORTHEAST VALLEY CONDOMINIUMS

Come and see why buyers of all ages are coming home to Bella Monte. These stunning luxury condominiums feature all of the things you want in a new home—and more! Bright, open floorplans that capture views and bring the outdoors in. Elegant designs with special creative touches and utmost energy efficiency. And most of all, a reputation for quality that Homes by Towne® has been crafting for over 30 years in the Valley of the Sun. Visit our beautiful models today to see why life is better in your Towne!



### LUXURY FEATURES

- Adjacent to Wildfire Golf Course
- Gated entries for true lock-and-leave freedom
- World-class golf, shopping, dining, entertainment and outdoor recreation right at your doorstep
- Spectacular views
- Resort-style amenities
- 1,360 to 1,835 square foot homes that live big!
- Attached garages/Standard fireplaces
- All single-level homes



[www.homesbytowne.com](http://www.homesbytowne.com)

**HOMES by TOWNE®**  
ZILBER BUILT SINCE 1949

HOMES BY TOWNE® • SALES BY TOWNE BROKERAGE SERVICES, INC. • DEVELOPED BY HBT NO.1 LLC • 706 EAST BELL ROAD, SUITE 212 • PHOENIX 85022 • (602) 996-3800

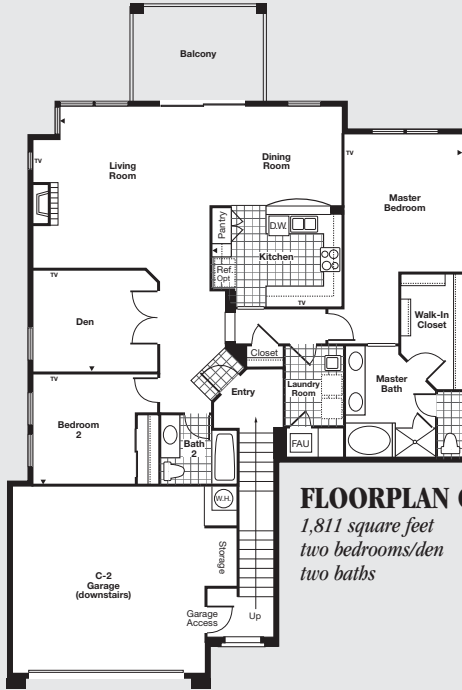
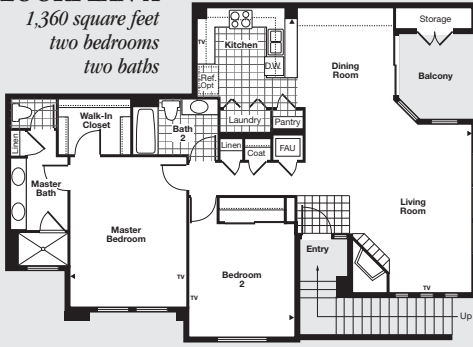


# Bella Monte

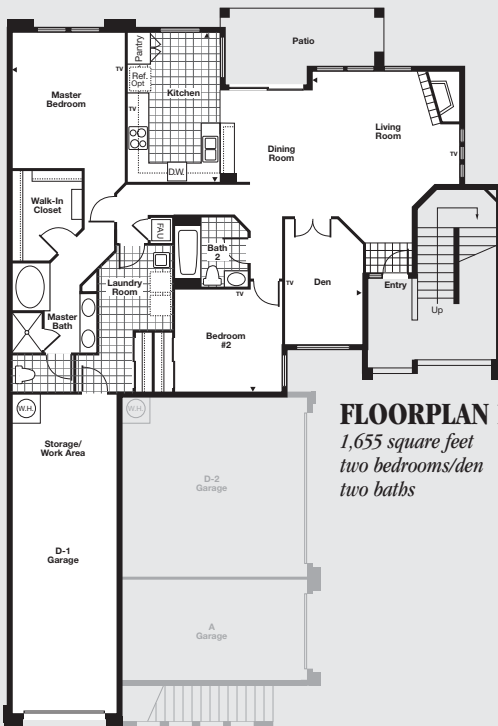
AT DESERT RIDGE

56th Street North of the Loop 101 • Phoenix • (480) 621-5700  
 Developed by HBT No.1 LLC

**FLOORPLAN A**  
 1,360 square feet  
 two bedrooms  
 two baths



**FLOORPLAN C2**  
 1,811 square feet  
 two bedrooms/den  
 two baths



**FLOORPLAN D1**  
 1,655 square feet  
 two bedrooms/den  
 two baths

## LIVABLE INTERIORS

- Ceramic floor tile in entry, kitchen, baths and laundry
- Wall-to-wall carpeting
- Elegant fireplace
- Recessed lighting throughout
- Panel colonist doors
- Hand-troweled walls with rounded corners
- Separate utility rooms
- Telephone outlets in kitchen, master bedroom and secondary bedrooms/dens
- Pre-wired for television and ceiling fan/light switches in living room, master bedroom and all secondary bedrooms/dens
- Structured wiring (CAT5) for home office
- Designer entry door with security dead bolt
- Decora light switches throughout
- Copper electrical wiring 110 v circuits (220 v service to range and dryer)
- Soft water loop

## DESIGNER KITCHENS

- G.E. appliance package consisting of:
  - Glass top self-cleaning range
  - 3-cycle dishwasher
  - Space saver microwave oven
  - Refrigerator
  - Washer and dryer
- Solid front hardwood cabinets with a choice of finishes
- Breakfast bar
- Pre-plumbed water line for ice-maker
- Laminate countertops
- Standard gas piping included to all range and dryer locations

## ELEGANT BATHS

- Bullnose edge cultured marble vanity tops with integral bowls
- Dual sinks in master baths
- Expansive plate glass mirrors
- Clear glass and chrome shower enclosure in master baths
- Elegant cultured marble surrounds in all tubs/showers
- Oversized oval tub in master bath (Plans C and D)
- Private, compartmentalized water closets in master bath
- Elongated water saving toilets throughout
- Recessed mirrored medicine cabinets
- Linen cabinets and closets (as shown in models)

## DISTINCTIVE EXTERIORS

- Concrete tile roofs
- Cast stone accents
- Varied exterior paint color scheme
- Steel garage door with automatic opener and key pad
- Spacious lighted patios and balconies
- Exterior electrical outlet on patios and balconies

## SENSE OF SECURITY

- Gated entry
- Smoke detectors
- Fire protection sprinkler system
- Community night lighting
- Pre-wire for security system

## LIFESTYLE FEATURES

- Located in the high Sonoran desert, at the heart of the Desert Ridge masterplanned community
- Lush desert landscaping
- Frontage on Wildfire Golf Course at Desert Ridge
- Adjacent to Desert Ridge Marketplace
- Immediate access to the Loop 101 Freeway via 56th Street full-diamond interchange
- Spectacular mountain and desert views
- Near world-class shopping, golf, hiking, horseback riding and a variety of outdoor recreation opportunities
- On-site entertainment areas include:
  - Heated pools and spas
  - Changing rooms
  - Cabanas
  - Barbecues
  - Fitness Centers

## ENERGY SAVING FEATURES

- High efficiency 13-SEER heat pump
- Low-E dual-pane insulated glass windows and doors
- Composite R-19 exterior walls/ R-30 ceiling insulation
- 50-gallon gas hot water heater

